

UNITEC Surface Finishing Tools & Accessories

The value is in the engineering... the payback is in the performance.™

CS Unitec offers high-performance power tools and abrasive accessories for surface finishing on **STEEL, STAINLESS STEEL, ALUMINUM** and other metals, as well as rigid plastics and wood.

Innovation is the engine of efficiency!™

Innovations in machine design, abrasive materials and production methods have led the way to:

SURFACE FINISHING TOOLS, ABRASIVES & ACCESSORIES



Hollow-core abrasives for linear grinding

The PTX Eco Smart is a linear surface finishing machine with a finned shaft for quick abrasive changing – simply slide on the abrasives and they secure automatically. This saves time and the abrasive wheels cost less. (Patented!)

Belts with buttonhole fastening system for grinding and polishing closed pipe constructions. (Patented!)



5/8"-11 SPEED NUT changeover

The **EASY-LOCK SPEED NUT** allows you to change flap discs in seconds, without tools. It is easily hand tightened and eliminates the need for wrenches or expensive hubs. (Patented!)



Important advancements in flap disc technology

- PLANTEX® high-tech hemp fiber compound (Patented!)
- POLY-MAGIC-WHEEL for dry polishing inside corners
- MAGNUM® FLEECE TOP for surface conditioning, fine finishing and polishing



Industrial hemp fiber is an almost ideal base material for backing plates of flap discs... and it is a renewable resource!

Safer and more efficient!

CS Unitec is the source for flap discs and abrasives that are free of fiberglass, mineral fibers and epoxy resin. They offer superior material removal, longer service life and smoother ergonomic handling.

Better for the environment!

The fiber in the high-tech PLANTEX® compound is derived from the hemp plant – a sustainable raw material which counteracts greenhouse emissions as it grows. The PTX hollow-core abrasives not only improve production efficiencies, but also minimize pollution from production to waste disposal... no plastic insert!

Better for your bottom line!

In addition to their time-saving features and high quality, flap discs and abrasives from CS Unitec can save you money – their cost of production is lower, their quality is among the best and they offer superior service life. Hollow-core abrasive wheels from CS Unitec are more affordable than traditional solid-core abrasives since they can be produced from less raw material. These new hollow-core abrasive wheels can also be used on traditional finishing machines with the aid of a simple core adapter (see page 85).



View product demonstrations at www.csunitec.com.

Surface Finishing Tools and Abrasives Index:

Linear Grinding & Finishing Systems		p. 86-93
PTX Eco Smart – electric		p. 86-88
Abrasives, Belts, Brushes, Grinding Wheels, etc.		p. 89-93
All-in-One Angle Grinder/Finishing, Blending & Polishing Machine		p. 94-95
VARILEX® Speed-controlled Grinder/Finisher/Polisher – 4" to 7" diameter		p. 94-95
Flap Discs and Abrasives for Grinding, Blending and Finishing		p. 96-101
FLAP DISCS - SUNFIRE, SPITFIRE, WELD-EX, ALUMINUM	PLANTEX®	p. 96-97
FIX HOOK & LOOP ABRASIVES & SYSTEM – flexible discs for finishing		p. 98-99
POLY-MAGIC UNITIZED WHEEL – for dry polishing in corners		p. 100
MAGNUM® TOPMIX – for increased material removal		p. 100
MAGNUM® FLEECE TOP – for conditioning, finishing and polishing		p. 101
MAGNUM® CLEAN – for pore-deep cleaning of metals		p. 101
Pipe Grinders/ Polishers and Multifunctional Systems		p. 102-105
PIPE-MAX – weld seam grinder and pipe sander/ polisher		p. 102
King-BOA tube/ rail sander & polisher		p. 103-104
GLADIUS® 1800 Multifunctional Grinder		p. 104
Abrasives & Accessories for Pipe Sanders & Grinders		p. 105
Deburring, Beveling and Faceting Machines		p. 106-111
ROLEI® PEF 500 Beveling & Deburring Machine		p. 106
ROLEI® EF 165 Beveling & Deburring Machine		p. 107
ROLEI® BE 5 Sheet Metal Deburring Machine		p. 108
ROLEI® EF 115 Handheld Deburring & Faceting Machine		p. 109
Portable Beveling Machines		p. 110-111



PTX ECO SMART

PLANTEX®

VARILEX®

FIX HOOK & LOOP

DEBURRING

BEVELING

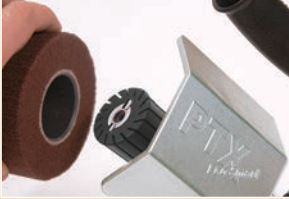
Safety Guidelines

Use all products according to the safety regulations of OSHA and directives by ANSI (American National Safety Institute) B7.1, European DIN EN 13743 and all other applicable international safety standards.

PTX ECO SMART

The professional linear finishing system for hard, continuous use.

A revolution in linear grinding! Simply slide on the abrasives and they secure themselves automatically when the machine turns. Fast and easy!



Press the spindle lock and simply slide on the abrasive wheels or brushes, turning in the correct direction onto the finned shaft. They will be secured automatically.



Grinding in corners is easy – simply slide the abrasive wheel on the finned shaft a little towards the outside.



Even narrow abrasive wheels can be used on the PTX Eco Smart and positioned freely on the finned shaft (no spacer rings required).



1 Adjustable handle for right and left-handed users. Anti-vibration handle for comfortable, fatigue-free working.



2 Simple speed control during operation. Tachogenerator for stable speeds.



3 QUICK-LOCK cable for fast, easy replacement if cable is damaged. 13 ft., included. **Part Number: 52004-2**



4 Infinitely adjustable cover guard with securing points for the extraction cover. **Part Number: 40005**



5 Extended polycarbonate cover guard for grinding wheel widths up to 6". **Part Number: 52706**



6 Hollow core shaft adapter for roller wheel widths up to 6" and vibration-free operation. **Part Number: 42004**



Perfect finishes on large surfaces, with no shadows or streaks.



www.csunitec.com

New abrasive mounting system saves time, reduces cost and eliminates vibration.

PTX Eco Smart is a multi-functional grinding and polishing system for flat surfaces and open or closed pipe constructions.

- Grind from coarse to shadow-free matte finish, up to a mirror polish
- Remove welds, deep scratches, oxidation and rust
- Ideal for stainless steel, steel and nonferrous metals including aluminum, brass, bronze and copper, as well as wood and rigid plastic
- Complete line of grinding wheels, belt sleeves, special brushes, polishing and maintenance abrasives available
- Balanced straight-line handling, high torque and electronic speed control
- Abrasive mounting system allows quick changeover, vibration-free operation and 100% concentricity
- Core-free abrasives save money and produce less waste



Satin finishing using interleaf fleece wheel.



A wide selection of hollow-core abrasives is available for the PTX Eco Smart. The lack of a core insert means that the abrasives are lighter, easier to use and less expensive.

PTX Eco Smart Specifications

Order No.	PTX ECO SMART	
Motor Power	15 Amp (1710 Watts); 110 Volt/60Hz (Also available: 230 Volt / 50 Hz)	
Speed Control Dial	Variable speed control from 1000 to 3800 RPM with tachogenerator for constant speed, even under load	
Wheel Width	2", 4" or 6" wide abrasives	
Wheel Diameter	up to 4 ¹ / ₂ "	
Weight	7.25 lbs.	
Standard Equipment	4" Interleaf (combi) wheel – P/N 47312 Shaft Adapter – P/N 42004	



Scan to Learn More



A range of professional PTX Eco Smart kits is available for a variety of applications. See page 88 for more information.

Accessories



Hollow-core Shaft Adapter

Allows user to utilize more economical hollow-core abrasives on traditional surface finishers. Fits 3/4" dia. x 4" long shaft and 1/4" keyway(s). Overall diameter of adapter is 1-3/4" (45mm)
Part Number: 42004

The PTX Bench Grinder – MULTI-MAX

Multipurpose sander with two shaft mountings for grinding discs, angle grinders and grinding rollers for longitudinal grinders. Uses all PTX abrasive wheels and discs. (See page 95 for more details.)



PTX Eco Smart Kits

PTX Professional Kit For Metalworking

This set comes in a strong, impact-resistant transport case and contains everything you need for shadow-free industrial finishes. Match or create any finish up to a mirror finish on metals. Prevent marks and fingerprints with newly developed cleaning products and preservatives.

Part Number 47004A



PTX Professional Kit for Metalworking includes:

- 1 PTX Eco Smart machine
- 1 Professional Case (P/N 80002)
- 1 40 grit flap wheel, 4" x 4-1/8" (P/N 47211)
- 1 80 grit Interleaf (Combi) wheel, 4" x 4-1/8" (P/N 47312)
- 1 Expansion roller, 3-1/2" x 4" (P/N 47005)
- 2 80 grit grinding belt sleeve, 3-1/2" x 4" (P/N 42080)
- 1 Fine fleece (Nonwoven) sleeve, 3-1/2" x 4" (P/N 42012)
- 1 Medium fleece (Nonwoven) sleeve, 3-1/2" x 4" (P/N 42011)
- 2 A45 TZ Pyramid sleeves, 3-1/2" x 4" (P/N 42245)
- 2 A30 TZ Pyramid sleeves, 3-1/2" x 4" (P/N 42230)
- 2 A16 TZ Pyramid sleeves, 3-1/2" x 4" (P/N 42216)
- 2 A06 TZ Pyramid sleeves, 3-1/2" x 4" (P/N 42206)
- 3 SuperPolish sleeves, 3-1/2" x 4" (P/N 42013N)
- 1 Belt driving roller (P/N 47006)
- 2 80 grit grinding belts, 1.2" x 24" (P/N 49080)
- 1 Medium fleece (Nonwoven) belt, 1.2" x 26" (P/N 49002)
- 2 A45 TZ Pyramid belts, 1.2" x 24" (P/N 49345)
- 2 A30 TZ Pyramid belts, 1.2" x 24" (P/N 49330)
- 2 A16 TZ Pyramid belts, 1.2" x 24" (P/N 49316)
- 2 A06 TZ Pyramid belts, 1.2" x 24" (P/N 49306)
- 3 SuperPolish belts, 1.2" x 26" (P/N 49004N)
- 1 Mini high gloss polishing paste, pink (P/N 40015T)
- 2 Big polishing pastes, white and blue [P/N 40013 (white) P/N 40014 (blue)]
- 1 PTX Brightex® scatter can (P/N 40029)
- 5 Microfiber cloths (P/N 40031)
- 1 Brilliance-Clean spray bottle (P/N 40050)
- 1 INOX-Protect spray bottle (P/N 40040)

PTX Basic Kit for Metal

Basic set for coarse finishing to #4 finish on flat surfaces and pipes.

Part Number 47003A



PTX Basic Kit for Metal includes:

- 1 PTX Eco Smart machine
- 1 Carrying Case (P/N 40008)
- 1 60 grit flap wheel, 4" x 4-1/8" (P/N 47212)
- 1 80 grit Interleaf (Combi) wheel, 4" x 4-1/8" (P/N 47312)
- 1 Expansion roller, 3-1/2" x 4" (P/N 47005)
- 1 Medium fleece (Nonwoven) sleeve, 3-1/2" x 4" (P/N 42011)
- 1 Belt driving roller (P/N 47006)
- 1 80 grit grinding belt, 1.2" x 24" (P/N 49080)
- 1 Medium fleece (Nonwoven) belt, 1.2" x 26" (P/N 49002)
- 1 40 grit grinding belt, 3.6" x 4" (P/N 42040)
- 1 60 grit grinding belt, 3.6" x 4" (P/N 42060)
- 1 80 grit grinding belt, 3.6" x 4" (P/N 42080)
- 1 120 grit grinding belt, 3.6" x 4" (P/N 42120)

PTX Kit For Woodworking

The complete set for treating wooden surfaces. Strong transport case with PTX Eco Smart and a range of brush wheels for various wood structures. Suction cover for extracting grinding dust particles.

Part Number 40004-3A



PTX Basic Kit for Woodworking includes:

- 1 PTX Eco Smart machine
- 1 Carrying Case (P/N 40008)
- 1 Suction cover (P/N 40005)
- 1 Spacer ring (P/N 40007)
- 1 PTX stranded wire wheel (P/N 46301)
- 1 Bristle wheel (P/N 46101)
- 1 Fiber wheel (P/N 46400)

PTX Grinding Wheels for Coarse and Fine Finishing

PTX abrasives from CS Unitec are made according to high quality standards. A unique production process guarantees high concentricity for vibration-free grinding – ideal for fatigue-free working and perfect surface finishes with no transitions or shadows. **Simply try it!** You will be surprised how much smoother a PTX grinding wheel or brush wheel is.



PTX FLEECE (Nonwoven) Wheel

Flexible nylon fleece impregnated with abrasives for a first-class finish. Produces shadow-free matte, satin and polished finishes. For removing oxidation on stainless steel and nonferrous metals and also suitable for smoothing wooden surfaces. Very high fleece content by fleece compression.

Diameter: 4"
Width: 2", 4-1/8" or 6"
Grit: 60, 80, 180, 280, 400, 600



PTX Interleaf (Combi) Wheel

Nylon fleece combined with abrasive flaps for matte finishing, burnishing and removing light scratches, oxidation and handling marks on stainless steel and all metals. For removing old paint on wood while smoothing at the same time.

Diameter: 4"
Width: 2", 4-1/8" or 6"
Grit: 60, 80, 180



PTX Flap Wheel

With radial abrasive cloth flaps in various grit sizes for removing rust, oxidation layers, minor scratches and for the regraining and burnishing of metals.

Diameter: 4"
Width: 2" or 4-1/8"
Grit: 24, 40, 50, 60, 80, 120, 180, 240



PTX CLEAN Wheel

Made of hard-textured, nonwoven fleece for cleaning and descaling welds, pore-deep removal of rust, oxidation and coatings, cleaning beams, bricks, etc. Produces an effective linear finish on stainless steel.

Diameter: 4"
Width: 2" or 4"
Grit: Medium



PTX GUM Wheel

Soft rubber impregnated with abrasive grit for the removal of minor scratches. Ideal for a bright, decorative linear finish on stainless steel and nonferrous metals and for smoothing wooden fibers.

Diameter: 4"
Width: 2" or 4"
Grit: 60, 180

HOLLOW-CORE ABRASIVES HAVE MANY ADVANTAGES:

- Easy to mount – simply slide on and off
- 100% concentricity – no vibration
- Lower cost and higher productivity!

We continue to carry abrasives with core inserts.
Contact us for more information.

PTX Fleece Nonwoven Wheels

Part No.	Grit	Size (dia. x width)
47411	60	4" x 4 1/8"
47412	80	4" x 4 1/8"
47413	180	4" x 4 1/8"
47414	280	4" x 4 1/8"
47415	400	4" x 4 1/8"
43601*	600	4" x 4 1/8"
47401	60	4" x 2"
47402	80	4" x 2"
47403	180	4" x 2"
47404	280	4" x 2"
47405	400	4" x 2"
47422	80	4" x 6"
47423	180	4" x 6"

* Keyed shaft

PTX Interleaf (Combi) Wheels

Part No.	Grit	Size (dia. x width)
47311	60	4" x 4 1/8"
47312	80	4" x 4 1/8"
47313	180	4" x 4 1/8"
47301	60	4" x 2"
47302	80	4" x 2"
47303	180	4" x 2"
47322	80	4" x 6"
47323	180	4" x 6"

PTX Flap Wheels

Part No.	Grit	Size (dia. x width)
47211	40	4" x 4 1/8"
47212	60	4" x 4 1/8"
47213	80	4" x 4 1/8"
47214	120	4" x 4 1/8"
47215	180	4" x 4 1/8"
47201	24	4" x 2"
47202	40	4" x 2"
47204	60	4" x 2"
47205	80	4" x 2"
47206	120	4" x 2"
47207	180	4" x 2"
47208*	240	4" x 2"

* Keyed shaft

PTX CLEAN Wheels

Part No.	Grit	Size (dia. x width)
47511	Medium (black)	4" x 4"
40018A*	Medium (black)	4" x 2"

* Keyed shaft

PTX GUM Wheels

Part No.	Grit	Size (dia. x width)
45061*	60	4" x 4 1/8"
45181*	180	4" x 4 1/8"
45180*	180	4" x 2"

* Keyed shaft



Expansion Roller

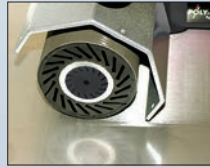
Use with sanding belts, fleece and felt sleeves. The sleeves are simply pushed over the expansion roller and held securely in place by the centrifugal force. **3-1/2" dia. x 4" wide - Part Number: 47005**

TIPS & TRICKS

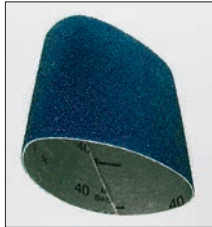
Expansion Roller - Hard Rubber

Internal expansion slots now allow easier sleeve replacement and improved adjustment to the workpiece, as well as vibration absorption and concentricity.

Part Number: 47005



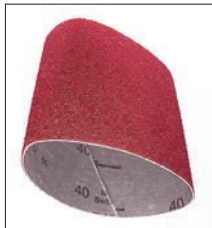
Belt Sleeves for Expansion Roller



PTX Zirconium Grinding Belt Sleeve

Made of zirconium. Removes deep scratches and grinds weld seams on metals. Far less rework is required as a result of using the time-saving linear grinding technique.

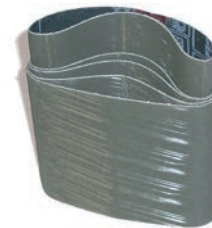
3-1/2" dia. x 4" wide
Grit: 40, 60, 80, 120, 150, 180



PTX Ceramic Grinding Belt Sleeve

High-performance ceramic aluminum oxide grain. Increased removal rate and longest life for highest productivity. Excels in all metals.

3-1/2" dia. x 4" wide
Grit: 40, 60, 80



PTX TZ Pyramid Sleeve

New abrasive cloth with pyramid-shaped grit structure. High material removal while producing a very fine finish, reducing the amount of work required when compared to grinding belt sleeves and fleece sleeves. Ideal for pre-polishing for fine mirror finishes and removing scratches and spot welds. Even roller scale can be removed easily.

3-1/2" dia. x 4" wide
Grit: A65/280, A45/400, A30/600, A16/1200, A06/2000



PTX Fleece "Nonwoven" Sleeve

Nylon impregnated with abrasive grit for removing minor to medium scratch marks and oxidation coatings, matte and satin finishing and deburring applications.

3-1/2" dia. x 4" wide
Grit: Coarse, Medium, Fine, Superfine



The expansion roller is helpful when grinding large areas and removing large welds.

PTX Zirconium Grinding Belt Sleeves

Part No.	Grit	Size (dia. x w)	Quantity
42040	40	3 1/2" x 4"	10 per pack
42060	60	3 1/2" x 4"	10 per pack
42080	80	3 1/2" x 4"	10 per pack
42120	120	3 1/2" x 4"	10 per pack
42150	150	3 1/2" x 4"	10 per pack
42180	180	3 1/2" x 4"	10 per pack

PTX Ceramic Grinding Belt Sleeves

Part No.	Grit	Size (dia. x w)	Quantity
42440	40	3 1/2" x 4"	10 per pack
42460	60	3 1/2" x 4"	10 per pack
42480	80	3 1/2" x 4"	10 per pack

PTX TZ Pyramid Sleeves

Part No.	Grit	Size (dia. x w)	Quantity
42270	A100/220	3 1/2" x 4"	10 per pack
42265	A65/280	3 1/2" x 4"	10 per pack
42245	A45/400	3 1/2" x 4"	10 per pack
42230	A30/600	3 1/2" x 4"	10 per pack
42216	A16/1200	3 1/2" x 4"	10 per pack
42206	A06/2000	3 1/2" x 4"	10 per pack

TZ PYRAMID GRIT COMPARISON TABLE

Corresponds to grit size	A65	A45	A30	A16	A06
	280	400	600	1200	2000

PTX Fleece "Nonwoven" Sleeves

Part No.	Grit	Size (dia. x w)	Quantity
42010	coarse (brown)	3 1/2" x 4"	4 per pack
42011	medium (red)	3 1/2" x 4"	4 per pack
42012	fine (blue)	3 1/2" x 4"	4 per pack
42009	superfine (grey)	3 1/2" x 4"	4 per pack

FLEECE COMPARISON TABLE

Corresponds to grit size	Coarse (brown)	Medium (red)	Fine (blue)	Superfine (grey)
	80	180	280	400

TIPS & TRICKS



To remove the grinding sleeve, place the expansion roller on a round object that is slightly smaller than the roller. Then push the sleeve down slightly using both hands.

Special Brushes for Metals, Wood and Hard Plastics



PTX Stranded Wire Wheels
Sturdy steel wire brush. For deburring, rust removal, roughing and cleaning metal. For brushing out soft annual rings on timber, leaving a rough rustic effect.
4" dia. x 2-7/8" wide – **Part No. 46301***
4" dia. x 1" wide – **Part No. 47702***
* Requires spacer ring 40007



PTX Bristle Wheel
Elastic nylon brush impregnated with abrasive grit. For roughing and deburring metal, as well as creating a rustic effect with even annual ring transitions on timber.
4" dia. x 2-7/8" wide – **Part No. 46101***
4" dia. x 1" wide – **Part No. 46102N***
* Requires spacer ring 40007

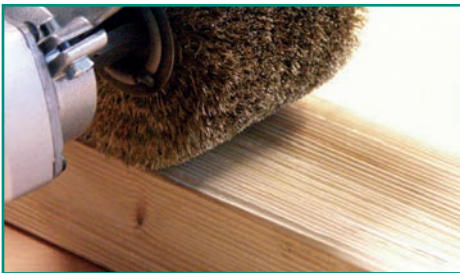


PTX Stainless Steel Wire Wheels
Elastic stainless steel wire brush. For cleaning welds, deburring, removing rust, roughing and removing coatings.
4" dia. x 2-7/8" wide – **Part No. 47721***
4" dia. x 1" wide – **Part No. 46202N***
* Requires spacer ring 40007



PTX Fiber Wheel
Elastic fiber brush. For polishing stained wood, satin finishing, pore-deep dust removal and cleaning applications.
4" dia. x 4" wide – **Part No. 46400**

Note: Above wheels are configured for keyed shaft. Hollow-core shaft adapter not necessary.



Stranded wire wheel for creating a rustic effect on wood



Cotton Buffering Wheel
Cotton yarn wheel for use with compounds. Produces a very bright high mirror finish. Use on flat, contoured or irregular surfaces.
4" dia. x 2" wide
Part No. CS 2405*
4" dia. x 4" wide
Part No. CS 2410
4" dia. x 6" wide
Part No. CS 2420
* Requires spacer ring 40007

Abrasives for Polishing to High-Gloss and Mirror Finish



PTX Felt Sleeve
Made of soft merino (endless) for polishing large stainless steel and nonferrous surfaces quickly to a mirror finish. Also suitable for hard plastics. Must be used with the expansion roller.
3-1/2" dia. x 4" wide (4 per pack)
Part No. 42013



PTX SuperPolish Sleeve
Revolutionary special fleece produces perfect brilliant, shadow-free mirror finishes on stainless steel and nonferrous metal surfaces using polishing compounds (white and blue) and pink polishing cream. SuperPolish fleece is absorbent, does not smear and saves significant work time. Must be used with the expansion roller.
3-1/2" dia. x 4" wide (4 per pack)
Part No. 42013N

Poly-PTX Cotton Rings

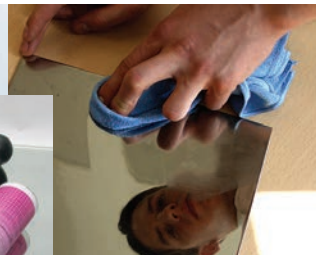
Fleece rings for polishing narrow or uneven stainless steel and nonferrous metal surfaces using polishing compounds (white and blue) and pink polishing cream. A separate Poly-PTX Cotton Ring must be used for each compound or cream so as not to mix different compound grits.



For polishing narrow or uneven stainless steel surfaces:
100mm x 12mm (4" dia. x 1/2" wide), 8 per pack, **Medium Part No. 40019M**
100mm x 12mm (4" dia. x 1/2" wide), 8 per pack, **Soft Part No. 40019-T**

For polishing aluminum, brass and other nonferrous metals:
100mm x 12mm (4" dia. x 1/2" wide)
Part No. 250 521

See page 92 for pre-grinding and polishing compounds, mirror finish creams, cleaners and protective sprays for finished metal surfaces.



Polishing and Maintenance Products (cont'd)



PTX Pre-grinding & Polishing Compound
Essential for polishing all metals, including stainless steel, aluminum, etc.

PTX WHITE pre-polishing compound (23 oz.) – **Part No. 40013**
PTX BLUE finishing compound (23 oz.) – **Part No. 40014**
PTX WHITE and BLUE mini pastes (approx 4.2 oz. ea.) – **Part No. 40009**



PTX Brightex® Softclean Powder (non-caustic)
For removing cream and compound residues. Scatter on the surface and wipe off with a microfiber cloth.

Aluminum scatter container with Brightex®
(approx. 7 oz.) – **Part No. 40029**
Bag, 2.2 lbs. – **Part No. 40028**
Scatter container only – **Part No. 40020**



PTX Polishing Cream, Pink

For high reflective finishing. Produces a perfect mirror finish on stainless steel and nonferrous metals when used with the SuperPolish Sleeve or Belt.

Miniature tube, 2 oz. – **Part No. 40015T**
Can, 2.2 lbs. – **Part No. 40015**

Microfiber Cloths

For pore-deep cleaning and even distribution of maintenance products and polishes. Our microfiber cloths produce a top finish on all materials.

Size: 13" x 14", package of 25 – **Part No. 40031**



INOX-Protect (hard sealant)
Protects finished and polished metal surfaces (stainless steel, steel, aluminum, brass, copper, etc.) with a clear, dry adhesive film. Removes fingerprints and other dirt.

Canister (w/ spray bottle), **1.3 gal.** – **Part No. 40041**



Brilliance-Clean

For streak- and residue-free cleaning of all surfaces, including stainless steel, steel, aluminum, brass and copper. Brilliance-Clean is not harmful to plastics, wood or coated surfaces. Remove fingerprints, dust, compound residue, minor oil and grease marks and adhesive residue. Evaporates quickly without leaving residue.

Part No. 40051
Spray bottle, 17 oz. – **Part No. 40050**

Canister (w/ spray bottle), **1.3 gal.** –



POLY Protection (oil film)

For cleaning and preserving finished and polished stainless steel and nonferrous metal surfaces. Protects against shadows and finger and water marks for a long time. Spray on and rub off with a microfiber cloth. Produces a darker effect on finished surfaces.

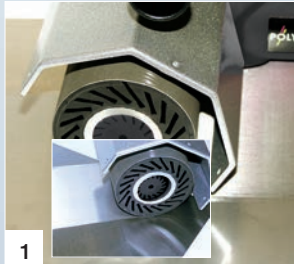
Spray bottle, 17 oz. – **Part No. 40011**

Canister (w/ spray bottle), **1.3 gal.** – **Part No. 40012**

TIPS & TRICKS

A perfect mirror finish on stainless steel

The newly developed grinding and polishing system, featuring special **TZ Pyramid** and **SuperPolish** fabrics from CS Unitec, produces a perfect mirror finish quickly and in just a few steps.



Step 1 - Pre-grinding
Prepare with **TZ Pyramid** sleeve grit A45 (possibly A65) to remove mill skin, scratches and minor unevenness.



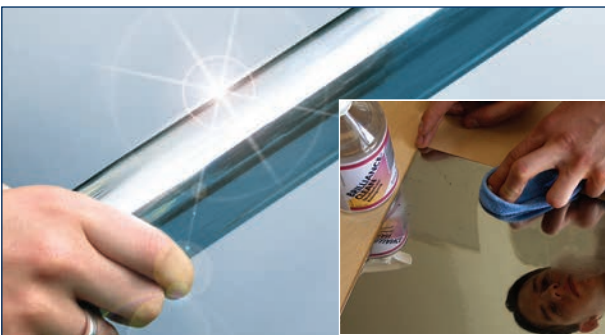
Step 2 - Intermediate grinding
Rework with **TZ Pyramid A30** and complete with **TZ Pyramid A16**. Use very little grinding pressure and grind perpendicular and diagonally.



Step 3 - Mirror finish polish
Use the **SuperPolish** sleeve with **white polishing paste**, then with **blue polishing paste**. Use a different sleeve for each paste grit. Polish diagonally. For a high-gloss finish, use the **SuperPolish** sleeve with the **pink high-gloss polishing cream**. Polish in one direction only.

Tip: After each step, remove the compound residue from the workpiece with **PTX Brightex® Softclean Powder** and a microfiber cloth.

The result... a brilliant mirror finish!



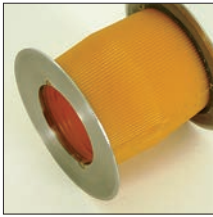
Maintain and protect finished or polished stainless steel surfaces.

Compound and cream residues can be removed using **PTX Brightex® Softclean** powder. Simply scatter on the softclean powder and wipe it off using a microfiber cloth.

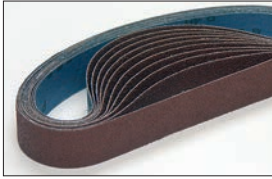
Compound residues, fingerprints, dust, minor oil and grease marks and adhesive residue can be removed effortlessly with **Brilliance-Clean**. Any residue will evaporate immediately.

To protect finished or polished metal surfaces, spray **INOX-Protect** on the surface, rub off with a microfiber cloth, wipe the surface dry and then polish briefly. The surface will be protected by a dry, invisible film for several weeks. Polished finishes will not be darkened by this product.

Abrasives for Pipe Constructions – Open or Closed



PTX Grinding Belt Roller with stainless steel flanges
For use with grinding, fleece, SuperPolish and felt belts. The belt roller is made of wear-resistant soft Vulculan with stainless steel discs on the sides. The surface is grooved to ensure that the abrasive belt does not slip.
Diameter: 3.5" x 2.8" Part No. 47006



PTX Grinding Belt in high-quality aluminum oxide (closed)
For coarse and initial grinding, rust removal and smoothing round metal pipes. For use with grinding belt rollers. For use on closed pipe constructions, see TIPS & TRICKS below. **Dimensions: 1.2" x 24"**
Grit: 40, 60, 80, 120, 150, 180, 240
See ordering information at right.



PTX TZ Pyramid Belt (closed)
Abrasive fabric with pyramid-shaped grit structure for removing scratches, roller scale and spot welds. TZ Pyramid belts allow high material removal while producing a very fine finish. They are ideal for initial grinding before polishing to a mirror finish. Because grit fineness is increased slowly, it is possible to omit several operations. Use with grinding belt rollers. For use on closed pipe constructions, see TIPS & TRICKS below.
Dimensions: 1.2" x 24", Grit: A65, A45, A30, A16, A06
See ordering information at right.



PTX Fleece Nonwoven Belt (open)
Buttonhole fastening system for fine grinding and pre-polishing open and closed pipe constructions and handrails. The fleece belt can be opened and closed as often as necessary. For use with grinding belt rollers. International patent and design protected.
Dimensions: 1.2" x 26", Grit: coarse, medium, fine, superfine. See ordering information at right.

With buttonhole – **PATENTED!**



PTX Felt Belt (open)
Made of merino felt with buttonhole fastening system for polishing open and closed pipe constructions and handrails. The polishing belt can be opened and closed as often as necessary. Use with grinding belt rollers and our polishing compounds and creams. Use a separate felt belt for each compound and cream grit - do not mix grits. International patent and design protected.
Dimensions: 1.2" x 26" Part No. 49004



PTX SuperPolish Belt (closed)
For a perfect mirror finish on pipe constructions and handrails. SuperPolish is a new, special micro fleece that produces a perfect, brilliant mirror finish on stainless steel and nonferrous metals. Smears and shadows are eliminated when used with our polishing compounds (white and blue) and pink cream. SuperPolish is absorbent and saves time. Use with grinding belt rollers.
Dimensions: 1.2" x 26" (not available with buttonhole fastening system) Part No. 49004N

PTX Grinding Belts (Aluminum Oxide)

Part No.	Grit	Size (w x l)	Quantity
49040	40	1.2" x 24"	10 per pack
49060	60	1.2" x 24"	10 per pack
49080	80	1.2" x 24"	10 per pack
49120	120	1.2" x 24"	10 per pack
49150	150	1.2" x 24"	10 per pack
49180	180	1.2" x 24"	10 per pack
49240	240	1.2" x 24"	10 per pack

PTX TZ Pyramid Belts

Part No.	Grit	Size (w x l)	Quantity
49365	A65/280	1.2" x 24"	10 per pack
49345	A45/400	1.2" x 24"	10 per pack
49330	A30/600	1.2" x 24"	10 per pack
49316	A16/1200	1.2" x 24"	10 per pack
49306	A06/2000	1.2" x 24"	10 per pack

PTX Fleece Nonwoven Belts (open)*

Part No.	Grit	Size (w x l)	Qty.
49001	coarse (brown)	1.2" x 26"	1
49002	medium (red)	1.2" x 26"	1
49003	fine (blue)	1.2" x 26"	1
49007	superfine (grey)	1.2" x 26"	1

* Feature buttonhole fastening system



PTX Special Adhesive Tape
Integrated glass fabric for joining grinding belts. Strong, heat-resistant adhesive. Join PTX grinding and TZ Pyramid belts for use on closed pipe constructions. Wrap tape around entire length of grinding belt, overlapping approximately 370°.
Dimensions: 1" x 165' Part No. 49000



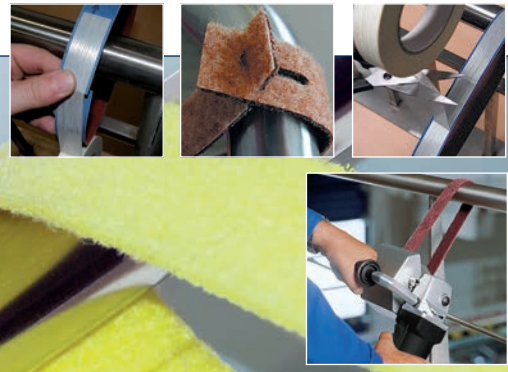
INOX Miter Tape
Protect adjacent finishes when grinding. Self-adhering 304 Stainless tape for use when creating distinct edges on finishes. Excellent for creating mitered corners. Easily cut with scissors, fast application and residue-free removal. Minimal thickness for accurate grinding lines.
Dimensions: One roll measures 6" x 8.2 ft. Part No. 40070

TIPS & TRICKS

Grinding and polishing closed pipe constructions

Fleece and felt belts with the patented buttonhole fastening system are ideal for working on closed pipe constructions and handrails. The grinding belt can be placed over the pipe and closed or opened again in a twist using the buttonhole system. Changing a belt is quick and easy. The belt can be opened and closed as often as required.

Closed belts such as the high-quality aluminum oxide belt or the TZ Pyramid belt must be cut open to work on closed pipe constructions. Place the belt over the pipe and join using our special adhesive tape (P/N 49000) over the entire length (approx. 370°).



VARILEX® NEW!
1802 HT *Professional*

The most powerful speed-controlled angle surface finishing and blending tool in its class.

Variable speed from 2400 to 8900 RPM, 15 Amp (1710 W) power, disc change in seconds without tools. For disc diameters up to 7".



VARILEX® is designed to efficiently maximize the capabilities of flap, grinding and cutting discs and the Hook & Loop system.

**INDUSTRY'S MOST POWERFUL
 BLENDING & FINISHING TOOL!**

Optimal speed setting for a range of grinding and polishing applications, yielding perfect results every time!



FLEXIBLE SHAFT - The new flexible drive shaft can now upgrade the VARILEX® to a powerful professional drive motor for all applications. See page 95 for details.



More than just an angle grinder – the most powerful single-handed multi-function machine available!



Change discs in seconds, without tools.

The VARILEX® has an infinitely adjustable speed between 2400 and 8900 RPM, for applications from grinding to blending, pre-polishing and polishing

- Ideal for use with both flap discs and polishing discs, as well as grinding and cutting wheels
- Balanced handle ensures fatigue-free grinding
- Tachogenerator keeps speed constant, even when grinder is operating at full load or low speeds
- Variable-speed control doubles disc service life, prevents glazing of disc and workpiece heat deformation and reduces noise level
- Motor design allows exceptional performance at low RPM – without motor overheating or burnout
- EASY-LOCK clamping nut and spindle lock allows disc changeover in seconds



VARILEX® Specifications

Order No.	65030U	
Motor Power	15 Amp (1710 Watts); 110 Volt/60Hz (Also available: 230 Volt / 50 Hz)	
Speed Control Dial	Infinitely adjustable from 2400 to 8900 RPM	
Wheel Diameter	4" to 7"	
Spindle Thread	5/8"-11 UNC	
Arbor Size	7/8"	
Weight	6.2 lbs.	

Use with various discs and safety guards

Available with optional 7" safety guard for use with various-size grinding discs from 4" to 7" diameter (typical disc diameters are 4", 4-1/2", 5", 6" and 7").

The VARILEX® is not designed for continuous use at low speed for polishing paint in the automotive trade.

FIX Hook & Loop Kits for VARILEX® System

Two versatile FIX Hook & Loop System kits for polishing up to a #8 mirror finish!

- Changeover in seconds between abrasives
- Wide selection available

See pages 98-101 for kits & abrasive accessories.



5/8"-11 EASY-LOCK SPEED NUT Clamping System



Using the **EASY-LOCK SPEED NUT**, you can change the abrasive disc on the VARILEX® in a matter of seconds – without tools!

Easy hand tightening eliminates the need for wrenches and expensive 5/8"-11 hubs. **Part No. 65008-1**

↓ TIPS & TRICKS



Polish stainless steel to a mirror finish with the VARILEX® I

(1) Initial grinding (remove scratches and roller scale, level welds) with TZ Pyramid disc A45 (grit 400) or A65 (grit 280). Finish with TZ Pyramid disc A30 (grit 600) and A16 (grit 1200). (→page 105)

(2) Main polish with SuperPolish disc and white polishing compound, then with blue polishing compound. Important: Use a separate disc for each compound grit.

(3) Mirror finish with SuperPolish disc and pink polishing cream. (→page 105)

Flexible Shaft Ordering Information

Item	Part No.
Flexible shaft with 5/16" steel wire and 5/8" thread	10015
Separate 1/8" collet for flexible shaft	10011A
Separate 1/4" collet for flexible shaft	10011B
Machine holder (powder-coated steel) incl. clamping screw for VARILEX®	10008

PLANTEX[®] Flap Discs

**INDUSTRY FIRST! NEW ECO-FRIENDLY
PLANTEX DISCS WITH INDUSTRIAL
PROTECTED HEMP BACKING**

PLANTEX[®] INDUSTRIAL HEMP FLAP DISCS

**Renewable Resource
Environmentally Sustainable**

**More Impact Resistant
vs. Fiberglass**

**Plant-Based Hemp
Backing Plate**

**Built-in Easy Spin-on
5/8" x 11**

Absorbs Heat & Sound

**Trimmable for
Extended Life**



SUPERIOR PERFORMANCE

Made in Germany 

- **Internationally Protected unique Formula: Optimal grinding, blending, & finishing**
- **Eco-Friendly: 50% less energy is used in production of PLANTEX Discs**
- **100% Usable flaps, down to the backing**

COMPETITIVELY PRICED



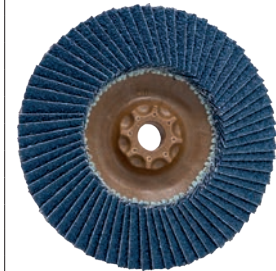
High performance, patented grain & design that excels on stainless steel, carbon steel, & heat sensitive alloys providing extra long-life. (Type 29)

Part No.	Diameter	Arbor	Grit	QTY
93520	4-1/2"	5/8" x 11 Spin On	Multigrain 40/60	10 Pack
93519	4-1/2"		80	
93521	5"		Multigrain 40/60	
93523	5"		80	
93516	6"	7/8"	Multigrain 40/60	
93517	6"	7/8"	80	



A premium zirconia grain for use on carbon steel and stainless steel. High metal removal rates and long life. (Type 29)

Part No.	Diameter	Arbor	Grit	QTY
93564	4-1/2"	5/8" x 11 Spin On	40	10 Pack
93566	4-1/2"		60	
93568	4-1/2"		80	
93569	4-1/2"		120	
93574	5"		40	
93576	5"		60	
93578	5"		80	
93579	5"		120	
93499	6"	7/8"	40	
93500	6"		60	
93501	6"		80	
93502	6"		120	



A zirconia grain for use on carbon steel & stainless steel, overhang excels for corners & tight areas, for fast cut & long-life- an excellent value. (Type 29)

Part No.	Diameter	Arbor	Grit	QTY
93485	4-1/2"	5/8" x 11 Spin On	Multigrain 40/60	10 Pack
93486	4-1/2"		80	
93488	5"		Multigrain 40/60	
93489	5"		80	



↑
Overhang

A special grain & formula to grind & blend aluminum and other non-ferrous materials while minimizing loading and providing long-life. (Type 29)

Part No.	Diameter	Arbor	Grit	QTY
93854	4-1/2"	5/8" x 11 Spin On	40	10 Pack
93856	4-1/2"		60	
93858	4-1/2"		80	
93859	4-1/2"		120	
93864	5"		40	
93866	5"		60	
93868	5"		80	
93869	5"		120	



FIX HOOK & LOOP SYSTEM

PATENTED!

Highly flexible backing disc for high-quality finishes. Ideal for surface conditioning and polishing up to a mirror finish.

The FIX Hook & Loop system takes advantage of a flexible backing pad and allows a disc to be changed in seconds without tools.

The FIX Hook & Loop system is a good fit wherever disc flexibility and frequent changeover are required. It will save time in industrial metalworking applications such as car body shops and repair shops.

The system requires a speed-controlled angle grinder, such as the VARILEX®. A wide range of abrasives are available for all steps – from rough grinding up to a mirror finish.

The FIX Hook & Loop's "green" backing disc is made of natural materials. The flexibility of the abrasives allows you to achieve results similar to stationary grinding machines.



The FIX family of abrasives must be used with the FIX original backing pads.

The FIX Hook & Loop system is an essential surface finishing and polishing system for all sheet metal applications.

FIX Hook & Loop System Kits

FIX Starter Kit

This kit includes a range of FIX Hook & Loop components, as well as a VARILEX® WSF 1802 Angle Grinder. **Part No. 80050U**

- 1 VARILEX® WSF 1802 HT, 110V, 5/8" spindle
- 1 Carrying case
- 1 FIX backing pad - 4-7/16"
- 1 Wheel guard for discs up to 5"
- 3 FIX fleece discs 4-1/2" (1 each - coarse, medium, fine)
- 1 EASY-LOCK SPEED NUT
- 2 FIX FLEECE TOP 4-1/2" (1 each - grit 80, 180)
- 2 FIX flap discs 4-1/2" (1 each - grit 40, 60)
- 2 FIX SuperPolish discs 4-1/2"
- 1 FIX clean 4-1/2"
- 1 PTX Brightex® Softclean Powder scatter can
- 4 FIX Zirconium discs 4-1/2" (1 each - grit 40 - 120)
- 2 Mini-polishing pastes, white and blue

FIX Test Kit

This kit contains all the FIX Hook & Loop System components to go from rough grinding up to a mirror finish. **Part No. 80051U**

- 1 Carrying case
- 1 FIX backing pad
- 8 FIX Zirconium discs 4-1/2" (2 each - 40, 60, 80, 120 grit)
- 10 FIX TZ Pyramid discs 4-1/2" (2 each - 280, 400, 600, 1200, 2000 grit)
- 8 FIX Surface Conditioning discs 4-1/2" (2 each - coarse, medium, fine, superfine)
- 6 FIX SuperPolish discs 4-1/2"
- 2 Mini-polishing pastes, white and blue
- 1 PTX polishing cream pink
- 1 PTX Brightex® Softclean Powder scatter can
- 2 PTX microfiber cloths
- 1 Sample size PTX Poly Protection
- 1 Sample size PTX Brilliance Clean



↓ TIPS & TRICKS

Perfect mirror finish on stainless steel and nonferrous metals

The new TZ Pyramid and SuperPolish discs for the FIX Hook & Loop system can be used with an angle grinder to create perfectly polished finishes on stainless steel and nonferrous metals.

Pre-grinding to remove scratches and level welds using TZ Pyramid discs with grit A30.

Fine grinding using TZ Pyramid discs with grit A16.

These two stages prepare the surface for polishing. TZ Pyramid is an aggressive abrasive, so there is no need to slowly increase the grit fineness. Use only contact pressure to grind – the weight of the grinder is generally sufficient.

Pre-polish with SuperPolish disc and white polishing compound.

Main polish with SuperPolish disc and blue polishing compound.

Perfect mirror finish with SuperPolish disc and pink cream.

Use a separate SuperPolish disc for each step – the different compound grits must not be mixed. Remove compound and cream residues after each stage using PTX Brightex® Softclean Powder and a microfiber cloth.

Abrasives for the FIX Hook & Loop System

The FIX family of abrasives must be used with the FIX original backing disc.



FIX Backing Pads with Centering Pin

For use with the FIX Zirconium, FIX TZ and FIX SuperPolish discs. The backing disc is made of special elastic with a centering pin for perfect alignment.

Without Foam:

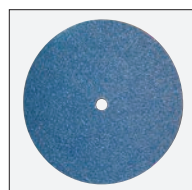
Diameter: 4.5" with 5/8"-11 thread – Part No. 80115U

Diameter: 6" with 5/8"-11 thread – Part No. 80150U

With 1/4" PUR Foam absorptive coating:

Diameter: 4.5", 5/8"-11 thread – Part No. 80115UF

Diameter: 6", 5/8"-11 thread – Part No. 80150UF



FIX Zirconium Disc

Abrasive disc with Hook & Loop fastening and an outstanding grinding capacity. Ideal for body shops and car workshops.

FIX Zirconium Disc Ordering Information

Part No.	Diameter	Grit	Quantity
80904	4 1/2"	40	50 pack
80906		60	
80908		80	
80909		120	
80914	6"	40	50 pack
80916		60	
80918		80	
80919		120	



FIX Fleece (Nonwoven) Disc

Versatile disc for fine surface conditioning and pre-polishing.

FIX Fleece (Nonwoven) Disc Ordering Information

Part No.	Diameter	Grit	Quantity
80615	4 1/2"	coarse (brown)	10 pack
80616		medium (red)	
80617		fine (blue)	
80618		superfine (grey)	
80650	6"	coarse (brown)	10 pack
80651		medium (red)	
80652		fine (blue)	
80653		superfine (grey)	

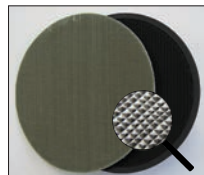


FIX (Nonwoven) Disc

The new FIX-Klett disc is a superfine soft nylon-fleece material for pre-polishing aluminum or other soft, nonferrous materials to a mirror finish.

Diameter: 4-1/2"; Superfine grit, Part No. 80680 (10 pack)

Diameter: 6"; Superfine grit, Part No. 80690 (10 pack)



FIX TZ Pyramid Disc

Abrasive fabric with pyramid-shaped grit structure for high material removal while producing a very fine finish. FIX TZ Pyramid discs reduce the amount of work required compared to grinding belt and

fleece sleeves. Ideal for pre-polishing for mirror finishes and for removing scratches and spot welds. An additional coating dramatically reduces the grinding temperature and protects the Hook & Loop components and workpiece.

FIX TZ Disc Ordering Information

Part No.	Diameter	Grit/Equivalent	Quantity
80932	4 1/2"	A65/280	10 pack
80940		A45/400	
80960		A30/600	
80970		A16/1200	
80980		A06/2000	
80985	6"	A65/280	10 pack
80986		A45/400	
80987		A30/600	
80988		A15/1200	
80989		A06/2000	



FIX SuperPolish Disc

SuperPolish is a special needle fleece that produces a perfect, brilliant mirror finish on stainless steel and nonferrous metals. Use with our polishing compounds (white and blue)

and pink cream to avoid smears and shadows. SuperPolish is absorbent, does not smear and saves time.

Diameter: 4-1/2"; Thickness: 1/4", Part No. 80715N (10 pack)

Diameter: 6"; Thickness: 1/4", Part No. 80750N (10 pack)



FIX SuperPolish Felt Disc

Special merino wool felt that produces a perfect, brilliant mirror finish on stainless steel and nonferrous metals. Use with our polishing compounds (white and blue) and pink cream to avoid smears and shadows.

Diameter: 4-1/2"; Thickness: 1/4", Part No. 80715 (10 pack)

Diameter: 6"; Thickness: 1/4", Part No. 80750 (10 pack)

When polishing with FIX SuperPolish Discs, use a separate SuperPolish disc for each compound and cream. The different compound grits *must not* be mixed. Remove compound and cream residues from the workpiece after each stage using PTX Brightex® Softclean Powder and a microfiber cloth.



POLY-MAGIC UNITIZED WHEEL

Dry polish stainless steel in corners up to a mirror finish!

The POLY-MAGIC-WHEEL is designed for finishing and dry polishing in corners, producing up to a perfect mirror finish in just two steps. These discs are composed of highly compressed fleece material, made by compressing single flaps that are then impregnated with foam for greater strength. This special process allows considerably more abrasive material to be used than on conventionally wound "unitized wheels and discs."

The POLY-MAGIC-WHEEL is ideal for grinding and polishing bead and corner welds. It may only be used frontally.



Polishing corner welds with the POLY-MAGIC-WHEEL

Obtaining good polish quality when finishing corner welds is difficult, especially for the fabrication of railings. The POLY-MAGIC-WHEEL was designed to help you more easily produce a truly perfect finish in these applications. This highly compacted fleece disc was designed specifically for grinding and polishing bead and corner welds.

Carry out the initial grinding and leveling of welds with the red disc, grit A (80 grit).

Then polish to a mirror finish using the POLY-MAGIC gray disc, grit B (900 grit). These discs are very aggressive and improve productivity. No polishing compounds or creams are required for polishing with the POLY-MAGIC-WHEEL (dry polish).

POLY-MAGIC-WHEEL

Dimensions 6 1/2" dia. x 7/8" arbor

Max. Speed 5000 RPM

Ideal Speed 3000 to 4000 RPM

Grits **A/80 (light gray):** for initial grinding and leveling welds (P/N 96720, 5 pk.)

B/900 (dark gray): for polishing to a perfect mirror finish (P/N 96721, 5 pk.)

Mirror finish in 2 steps:



1 POLY-MAGIC-WHEEL A (80 grit)



2 POLY-MAGIC-WHEEL B (900 grit)



MAGNUM® TOPMIX

Increased material removal, longer service life.

The MAGNUM® TOPMIX was developed to increase material removal during finishing while also improving service life. The 80 combination grit is much more aggressive than our MAGNUM® FLEECE TOP 80 grit (see next page). Individual flaps with foamed and compressed fleece offer a much higher removal capacity, making it ideal for removing spot welds and deep scratches on stainless steel, steel and nonferrous metals. The coordinated fleece combination additionally ensures that a good finish is achieved. The MAGNUM® TOPMIX also offers excellent service life, making deburring and cleaning of cast parts and welds a breeze.

Ideal for speed-controlled angle grinders.

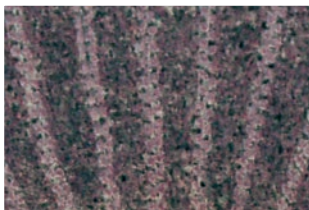
MAGNUM® TOPMIX

Dimensions 5 dia. x 7/8" arbor

Max. Speed 6000 RPM

Ideal Speed 2000 to 4500 RPM

Grits **40/80** (P/N 96705, 5 pk.)



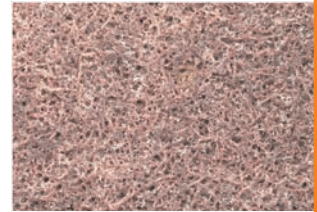
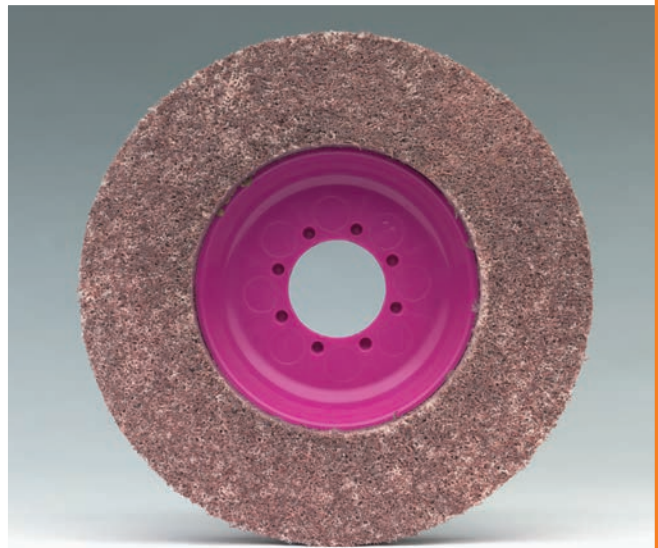
MAGNUM® FLEECE TOP

Made of foamed, compressed grit, interspersed nonwoven fleece.

The MAGNUM® FLEECE TOP is a versatile fleece disc for surface conditioning, fine finishing and polishing, offering up to 8x the service life of traditional fleece and surface conditioning discs. The FLEECE TOP is an ideal disc for metalworking that requires fine grinding and pre-polishing to a uniform clean finish. It is effective at descaling and removing oxidation, scratches, rust, burrs and paint. It replaces a wire brush, abrasive paper and grinding rubbers and is self cleaning, with a special mixture that prevents glazing and loading. The foamed fleece ring is approx. 5/8" thick. This highly compressed quantity of fleece material ensures an extra-long service life.

Ideal for speed-controlled angle grinders.

MAGNUM® FLEECE TOP	
Dimensions	4 1/2" dia. x 7/8" arbor
Max. Speed	8000 RPM
Ideal Speed	2000 to 4500 RPM
Grits	80 (P/N 96710, 5 pk.)
	180 (P/N 96711, 5 pk.)
	280 (P/N 96712, 5 pk.)
	400 (P/N 96713, 5 pk.)
	600 (P/N 96714, 5 pk.)
	900 (P/N 96715, 5 pk.)



Scan to
Learn More



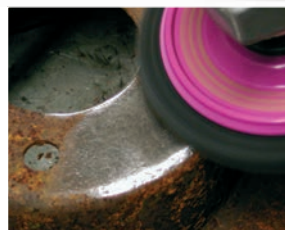
MAGNUM® CLEAN

For pore-deep cleaning of metals
(sandblasting effect).

MAGNUM CLEAN® is a flexible cleaning disc for the pore-deep cleaning of metals. This flexible coarse fleece disc is interspersed with silicon carbide grit and cleans without harming the base material. The disc itself is iron free, which means that there is no risk of corrosion. The coarse fleece material will not glaze or load, even if exposed to heavy contamination. MAGNUM CLEAN® is the ideal cleaning disc for pore-deep removal of paint, rust, scale and oil smears, as well as for cleaning and exposing without material removal. It is ideal for use in body shops (cleans thin sheet metal with no material removal) and in the automotive industry, and it is also suitable for undersealing, renovating, painting and building work. MAGNUM CLEAN® is particularly good for removing paint and other coatings on wood, stone and metal (including window frames, doors and frames, furniture, house facades, graffiti, railings, fences, supports and machines).

Ideal for speed-controlled angle grinders.

MAGNUM® CLEAN	
Dimensions	5 dia. x 7/8" arbor
Max. Speed	5000 RPM
Ideal Speed	2000 to 4500 RPM
Grits	Medium (P/N 96700, 5 pk.)



PIPE-MAX

Pipe Belt Grinder

Combination pipe belt sander and grinder for diameters up to 14"

Follow contours to grind and polish pipes and handrails up to a high-gloss finish

- Grinds weld seams on flat surfaces – leaves no edges
- Belt wraps around pipe and requires only a few steps to polish entire circumference
- Powerful 15 Amp motor and variable-speed control from 950 to 3500 RPM
- Quick and easy changing of sanding belts
- Ideal for stainless steel, aluminum and high-quality metals
- Patented damping concept with gas pressure damper enables maximum "pipe enclosure" with minimal effort.
- Tachogenerator provides constant speed, even under load



The new contour concept with the elastic return roller allows the grinding and polishing belts to conform around the external diameter of the pipes with light, uniform pressure.



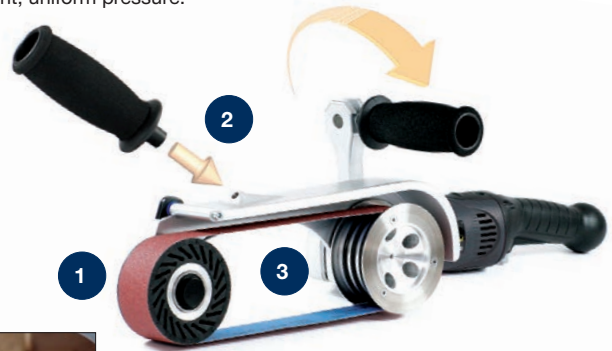
1 Gas pressure cylinder allows belt to conform to contour of pipe with proper pressure.



2 Additional handle for comfortable, overhead working.



3 The drive roller with the rubber rings ensures that the grinding belts will not slip.



The soft grinding roller made of PUR material also allows comfortable longitudinal grinding of flat surfaces, for example to remove spot welds or eliminate deep scratches.



Scan to Learn More

PIPE-MAX Specifications

Order No.	38502A
Belt Size	30.7" L x 1.5" W*
Power	15 Amp (1710 W) / 110V
Pipe ø Max.	14"
Weight	11.25 lbs.

230V models also available

Standard Equipment

1 PIPE-MAX basic machine, 110V	2 PIPE-MAX SC-fleece belts, medium
1 QUICK-LOCK cable, 13 feet	2 PIPE-MAX SC-fleece belts, fine
1 additional handgrip	3 spare rubber rings
PIPEMAX grinding belts, 2 each grits 40, 60, 80 and 120	

The King-Boa, Pipe-Max & Gladius all use the same abrasives. To see the abrasives offered see page 105



KING-BOA™ **NEW!**

**Blend, finish and polish up to a mirror finish
For use on all metal handrails, railing, tubing and pipe**

LET THE KING-BOA DO THE WORK FOR YOU!

- Fast, efficient and uniform blending and finishing on round handrails and pipe up to 5" dia.
- Wraps around the workpiece 270° - rotate slightly for 360° all-around finish.
- Increase productivity and reduce fatigue – ergonomic design and optimal belt tension requires minimal user pressure.
- Planetary gearbox engineered for 50% more torque



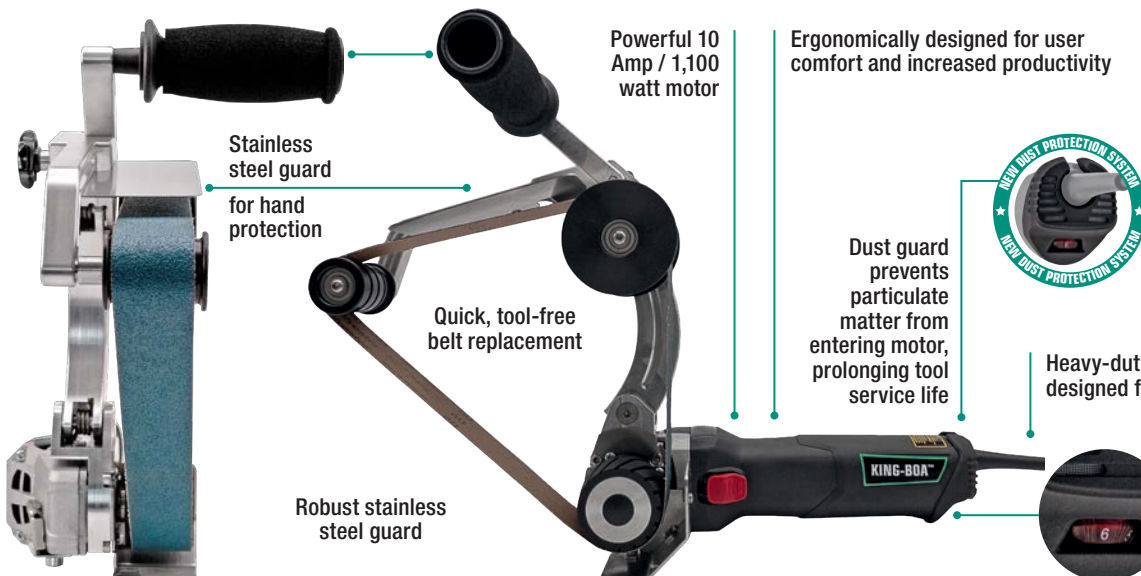
**Scan to
Learn More**



IDEAL FOR USE IN NARROW SPACES

180° adjustable top handle and compact head fit in narrow areas between walls and floors

180° adjustable handle for working in tight spaces (closed handrails and small-diameter pipe)



Powerful 10 Amp / 1,100 watt motor

Ergonomically designed for user comfort and increased productivity

Stainless steel guard for hand protection

Quick, tool-free belt replacement

Robust stainless steel guard

Dust guard prevents particulate matter from entering motor, prolonging tool service life



HighTorque

Powerful, high-torque planetary gearbox

30% higher power reserves with up to 50% more torque vs. the competition

Electronic overload protection and soft start
Made in Germany

Heavy-duty housing and electrical cord – designed for professional use

Adjustable dial for precise control of belt speeds from 800 – 3,000 rpm

See KING-BOA Abrasives & Specifications on Next Page

KING-BOA™ *NEW!* SPECIFICATIONS

KING-BOA™ Specifications

Part No.	38810U
Power	10 Amp / 1,100 watt
Belt Speed	800-3000 RPM
Belt Size	30.7" x 1.5" (780mm x 40mm)
Weight	9 lbs.
Capacity	3/4" to 3-1/4" (Ideal Pipe Dia.) 5" (Maximum Pipe Dia.)

230V models also available

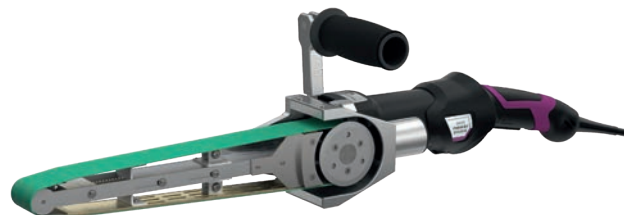
Standard Equipment

- 1 KING-BOA Railing Belt Sander
- 1 Motor Protection Dust Guard
- 6 Zirconium Belts (2 ea. 60, 80, & 120 Grit)
- 2 SC Fleece Belts (1 medium & 1 fine)



Gladius® Multifunctional Grinder *NEW!* Ideal for hard-to-reach areas such as corners, angles and tight spaces.

- Grind, deburr, blend and polish ferrous and nonferrous metals, wood and plastic
- Tachogenerator provides constant speed, even under load
- Fast changing of belts
- Abrasive guide extension arm consists of a new special alloy for significantly reduced grinding temperatures



Gladius® Specifications

Order No.	38901U
Belt Size	30.7" L x 1.5" W*
Power	15 Amp / 110V
Speed	820 - 3800 RPM
Weight	10 lbs.



**Scan to
Learn More**

Standard Equipment

- 1 GLADIUS®
- 1 pre-installed fine dust protective cap
- 4 premium zirconia belts
- 5 replacement rubber O-rings



Abrasives & Accessories for PIPE-MAX, KING-BOA & GLADIUS

Abrasive Grinding Belts

10 Belts per package

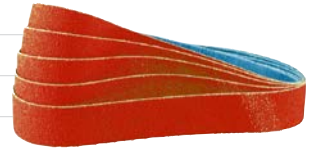
Grit	Part No.
24	38523
40	38524
50	38525
60	38526
80	38528
120	38529



Ceramic Grinding Belts

10 Belts per package

Grit	Part No.
24	38124
36	38136
60	38160
80	38180
100	38100



Surface Conditioning Fleece Belts

4 Belts per package

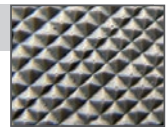
Grit	Part No.
Coarse (brown)	38531
Medium (red)	38532
Fine (blue)	38533
Superfine (grey)	38534



TZ Pyramid Belts

10 Belts per package

Grit	Part No.
A100/220	38544
A65/280	38545
A45/400	38546
A30/600	38547
A16/1200	38548



Polishing Compounds

PTX Pre-grinding & Polishing Compound

Essential for polishing all metals.

PTX WHITE pre-polishing (23 oz.) – **Part No. 40013**

PTX BLUE finishing (23 oz.) – **Part No. 40014**

PTX Polishing Cream, Pink

High reflective finishing – perfect mirror finish on stainless steel and nonferrous metals. Use with SuperPolish Belt.

Miniature tube (2 oz.) – **Part No. 40015T**

Can (2.2 lbs.) – **Part No. 40015**



SuperPolish Belt

4 Belts per package
Part No. 38850



PTX Brightex® Softclean Powder (non-caustic) Remove cream and compound residues.

Microfiber cloths, 25 qty. (13" x 14") – **Part No. 40031**

Aluminum scatter container w/ Brightex® (approx. 7oz.) – **Part No. 40029**

Bag (2.2 lbs.) – **Part No. 40028**



Cleaners/Sealants also available

Brilliance-Clean

Streak- and residue-free cleaning

POLY Protection (oil film)

Clean and preserve finished and polished metal surfaces.

INOX-Protect

(hard sealant)
Protect finished/
polished metal
surfaces.

Scan QR Code
for all polishing
and maintenance
products



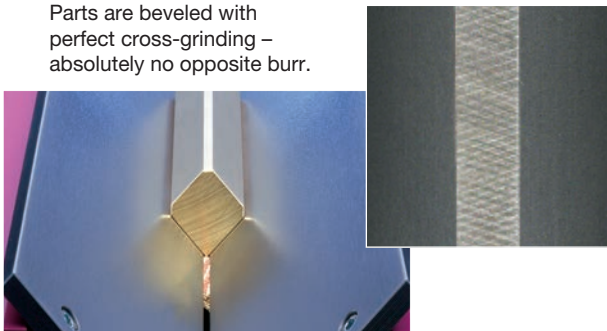
Speak to one of our technical specialists for assistance with your metal finishing applications

ROLEI® PEF 500

Beveling and deburring machine for facets at angles of 30° to 60°.

Precision beveling and faceting machine for all metals from stainless steel to aluminum. Infinitely adjustable beveling angle from 30° to 60° and infinitely adjustable face width from 0" to 3/8" (precise adjustment using knob).

Parts are beveled with perfect cross-grinding – absolutely no opposite burr.



ROLEI® PEF 500 Specifications

Order No.	30201 (220 Volt) 30200 (380 Volt)
Motor	220V single-phase or 380V 3-phase
Dimensions	20" x 14" x 14"
Weight	88 lbs.
Options	Machine stand, extraction port for dust extractor connection

Supplied with 80 grit disc. Other grits available.

Optional accessories:



Machine stand
Part No. 30220
Sturdy steel machine stand with black powder coating.



Sliding feed plate
Part No. 30210

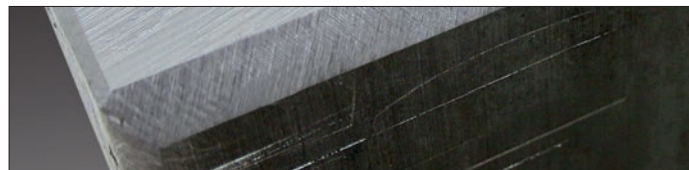


Spare flap discs
The flat disc with special hard compression for deburring machines. Self-sharpening and extremely long service life!

60 Grit Part No. 36060
80 Grit Part No. 36080
120 Grit Part No. 36120



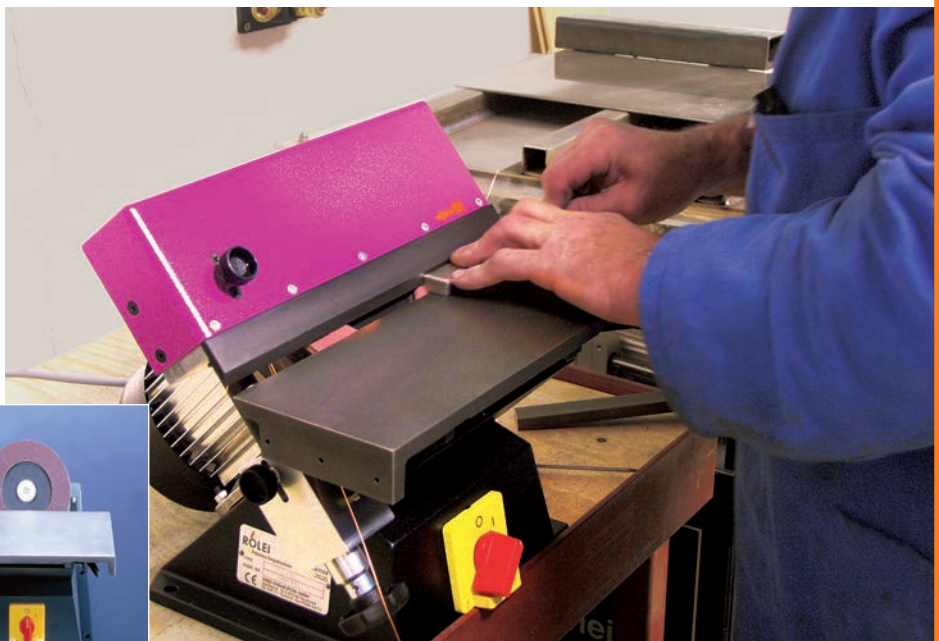
Infinitely adjustable facet angle from 30° to 60°



Scan to Learn More

ROLEI® EF 165

Beveling and deburring machine for facets at an angle of 45°.



Optional dust extraction port
Part No. 30130



Beveling and deburring machine with a fixed beveling angle of 45° and an infinitely adjustable beveling width from 0" to 3/8" for all metals from stainless steel to aluminum. Precise adjustment of the face width using a hand wheel.



Scan to
Learn More

Optional accessories:



Machine stand
Part No. 30120
Sturdy steel machine stand with black powder coating.



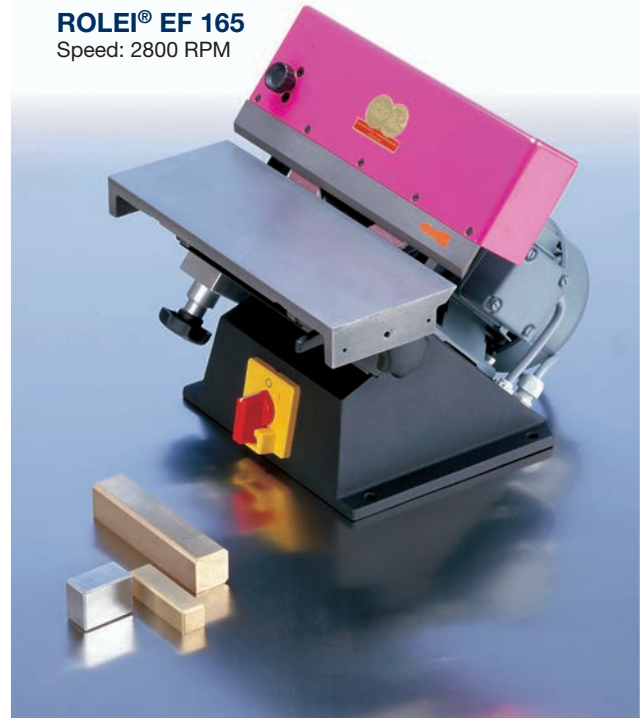
Extended support table
Part No. 30110
Made of sliding grey cast material.
27-1/2" long



Spare flap discs
The flat disc with special hard compression for deburring machines. Self-sharpening and extremely long service life!

- 60 Grit Part No. 36060
- 80 Grit Part No. 36080
- 120 Grit Part No. 36120

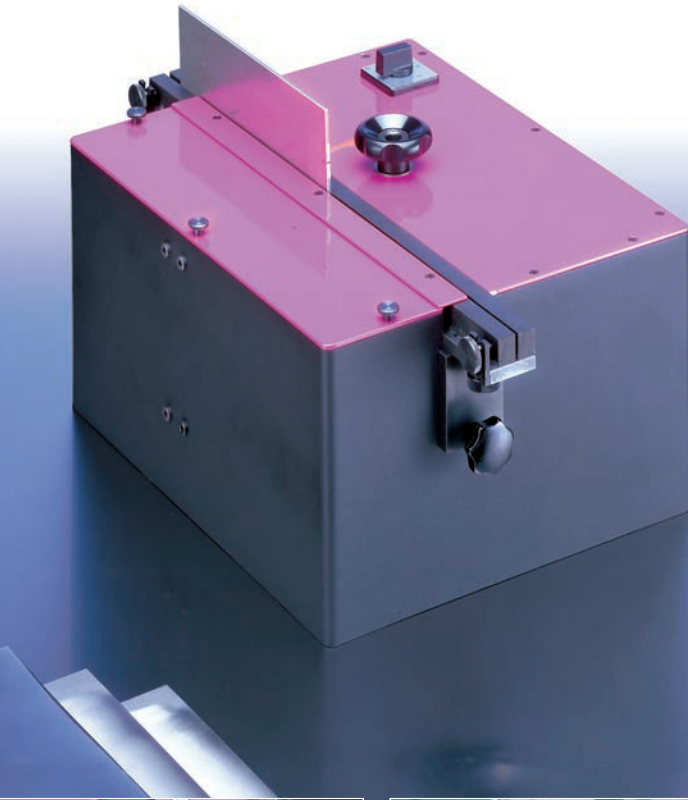
ROLEI® EF 165
Speed: 2800 RPM



ROLEI® EF 165 Specifications

Order No.	30101 (220 Volt) 30100 (380 Volt)
Motor	220V single-phase or 380V 3-phase
Dimensions	14" x 13" x 12"
Support Table	5" x 13"
Weight	40 lbs.
Options	Table extension, machine stand, extraction port for dust extractor connection

Supplied as standard with 80 grit disc. Other grits can also be used to suit the facet width and materials.



ROLEI® BE 5 Sheet Metal Deburring Machine – 2 Speeds

Double-sided deburring of sheet metal up to 0.2" thick can be achieved in a single operation with no additional treatment. The machine's flap wheels can be easily adjusted as they wear. One set of wheels lasts for approximately 6500 feet of stainless steel sheet. Supplied standard with two 80 grit flap wheels, the ROLEI® BE 5 can be used with other optional grits to suit the facet width and materials of your particular application.



Scan to Learn More

Features two-speed operation:

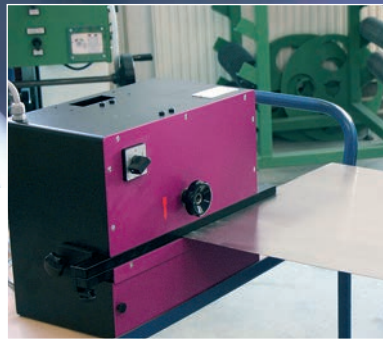
- Speed 1: fine deburring, 600 RPM
- Speed 2: standard deburring, 1200 RPM

Optional accessories:

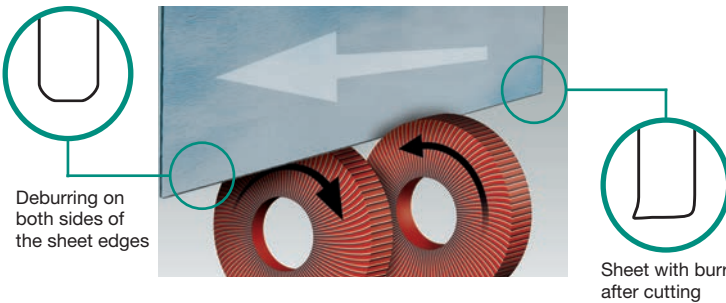
- Spare flap wheels (40, 60, 80, and 120 grit)
- Machine stand, made from strong steel
- Port for industrial dust extractor (Part No. 30330)

ROLEI® BE 5 Specifications

Order No.	30310A (220 Volt) 30310 (380 Volt)
Motor	220V 3-phase, 2 speeds, .2 KW, 0.9 Amp 380V 3-phase, 2 speeds, .2 KW, 0.45 Amp
Dimensions	19.7" x 12.8" x 7.9"
Weight	64 lbs
Options	Machine stand, dust extractor connection port, teflon tape



Can also be used on its side with roller tables for large thin sheets.



ROLEI® BE 5 Flap Wheels

Part No.	Grit	Qty.
37040	40	2 discs per pack
37060	60	2 discs per pack
37080	80	2 discs per pack
37120	120	2 discs per pack



Spare flap wheels for sheet metal deburring machine BE 5
Grit 40, 60, 80, 120



Machine stand - Part No. 30320
Strong steel machine stand with black powder coating



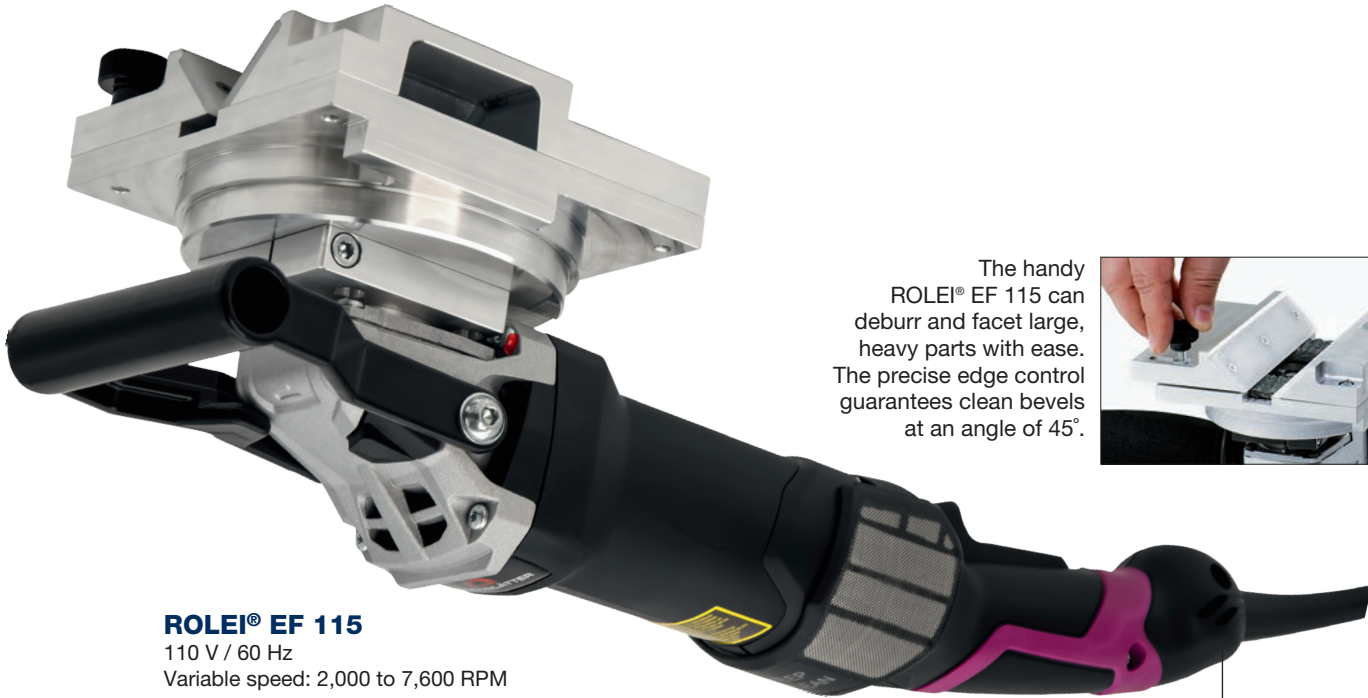
Dust extraction port (end and bottom views shown above)
Part No. 30330



Teflon protective tape – self-adhesive (2 required)
Part No. 30341 (27.5" L x 3/4" W)
For extension rail to protect from scratching the workpiece

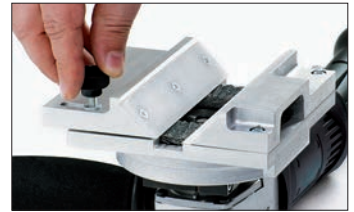
ROLEI® EF 115 Hand-held Deburring and Faceting Machine

This handy deburring machine is designed for awkward, heavy parts, such as machine tables, frame constructions or large sheets of metal. Easy to handle, with good edge control. The EF 115 is also ideal for chamfering welds. Fixed beveling angle of 45°, infinitely adjustable facet width from 0" to 3/8".



ROLEI® EF 115
110 V / 60 Hz
Variable speed: 2,000 to 7,600 RPM

The handy ROLEI® EF 115 can deburr and facet large, heavy parts with ease. The precise edge control guarantees clean bevels at an angle of 45°.



ROLEI® EF 115 Specifications

Order No.	30116
Universal Motor	15 Amp (1710 W) 110/60 Hz (230V / 50 Hz, 1600 W also available)
Speed	Infinitely adjustable from 2000 to 7600 RPM
Weight	9 lbs
Options	Sliding Guide rail, plastic (Part no. 30117, 2-piece set)

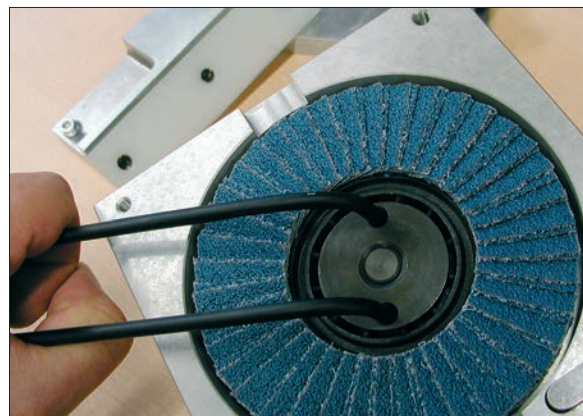


QUICK-LOCK cable for fast, easy replacement, e.g. if the cable is damaged. 13 ft., included. Part No. 52004-2



Scan to
Learn More

Simple disc changing.



ROLEI® EF 115 Flap Discs

Part No.	Grit	Quantity
21050A	50	10 discs per pack
21060A	60	10 discs per pack
21080A	80	10 discs per pack
21120A	120	10 discs per pack

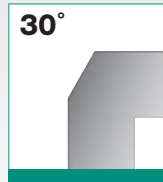
Multipurpose Beveling Machines

Bevel, deburr and chamfer edges of steel plate faster and cleaner than angle grinders.

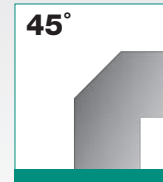
- Bevel 30°, 45°, 2.5mm or 1.6mm radius on steel, stainless, nonferrous metals, brass and plastics
- Deburr and chamfer; straighten edges, internal and external radii; and countersink holes from 7/8" dia.
- Fine adjustment feature for slight chamfers when deburring for the preparation of weld seams
- Ideal for: **Boiler and process plant construction** (prepare weld seams on heat exchangers); **Mechanical engineering** (deburr machine parts, chamfer edges to protect against paint peeling and create visible edges); **Sheet metal** (deburr cut edges); **Moldmaking** (straighten edges, internal and external radii and countersink holes from 7/8" dia.)



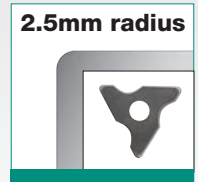
Three Milling Options



Milling cutter 30°, Chamfer 0 - 1/4"



Milling cutter 45°, Chamfer 0 - 1/4"



Milling cutter 2.5mm radius (0.098")



0-1/4" beveling width

Three Models:
EKF 300.3 - 30°
EKF 450.3 - 45°
EKF 452.3 - 2.5R

Also available:
1.6mm / 0.063"
cutting inserts (SHM 201).
Contact us for details.



Fine adjustment
Precise control of chamfer when deburring for weld seam preparation

Scan to Learn More



0-9/16" (15mm) beveling width

Two Models:
EKF 630 - 30°
EKF 645 - 45°

Standard equipment includes milling head and two inserts, SW22 key, carrying case and user's manual. See our Price List for available accessories.

Specifications	Model EKF 300.3*	Model EKF 450.3*	Model EKF 452.3*	Model EKF 630	Model EKF 645
Beveling Angle	30°	45°	2.5mm (0.098")	30°	45°
Bevel Width (max.)***	1/4"	1/4"	1/4"	9/16"	9/16"
Motor Power	13.5 Amp/110V**			19.1 Amp/110V**	
Cutting Speed	3000 SFPM			1200-1500 SFPM	
Cutting Inserts Qty.	3			20	
Available Inserts (Sold as pack of 10)	SHM200; SHM 200-E (for stainless steel); SHM 202 (2.5mm radius); SHM 201 (1.6mm radius)			SHM 900	
Dimensions	12 1/2" L x 5 1/2" W x 11 5/8" H			15 3/4" L x 13 13/16" W x 11 13/16" H	
Weight	10.5 lbs.			22.5 lbs.	

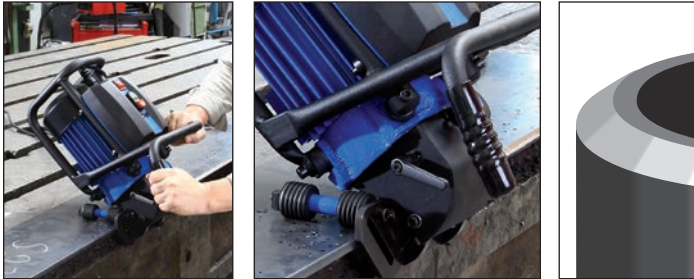
*Heads are interchangeable *220 V / 50 Hz also available

***Max bevel width may require several passes, depending on material hardness

SKF Beveling Machine for Plates and Pipes

Fast, easy preparation of weld seams and bevels on plate or pipe.

- Bevel 15° to 60° angles and land width up to 3/4" on steel, stainless steel, aluminum and nonferrous metal plates and pipe
- Work on welding angles and weld preparation on pipes/tubes with a minimum OD of 6-1/4" (160mm) with built-in pipe roller guide; ideal for beveling pipe 6-1/4" OD and larger
- Robust design, single operator control and easy handling
- Anti-vibration system for operator comfort



Standard equipment includes one milling head, 10 sintered carbide reversible cutting inserts, tools for assembly, built-in pipe roller guide, steel carrying case and user's manual. Please see our Price List for available accessories.

Cutting Plates - Sold as pack of 20
Part No. **SHM 800 N:** for beveling carbon and stainless steel

SKF Portable Beveler Specifications

Order No.	SKF 025
Beveling Width	3/4" max.***
Motor Power	15 Amp
Voltage	110V (220V / 50 Hz also available)
Cutting Speed	1800 SFPM
Cutting Inserts	10
Dimensions	16 1/2" L x 13" H
Weight	43 lbs.

***Max bevel width may require several passes, depending on material hardness

EASY ACCESS / SAFETY CONTROLS

ERGONOMIC HANDLES

ROLLER GUIDES FOR ACCURACY & REDUCED USER FATIGUE



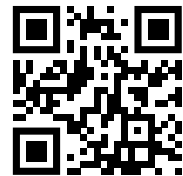
PIPE BEVELING FOR PIPE OVER 6-1/4" OD

EXCEPTIONAL COOLING FOR CONTINUOUS USE

HEAVY-DUTY 10 AMP (1100 w) MOTOR

SEAMLESS ANGLE ADJUSTMENT 15° - 60°

CHAMFER WIDTH ADJUSTMENT UP TO 3/4"



Scan to Learn More